



# VIEWFINITY

## User Migration Product Quick Start Guide

Version 1.5

March 2010



2010

# Table of Contents

<b>1. INTRODUCTION</b> .....	<b>3</b>
1.1 VIEWFINITY USER MIGRATION.....	3
<b>2. INSTALLATION AND SETUP REQUIRMENTS</b> .....	<b>3</b>
2.1. PRE-REQUISITES CHECKLIST .....	3
<b>3. VIEWFINITY USER MIGRATION USAGE</b> .....	<b>4</b>
2.1. CREATE MIGRATION PROJECT.....	4
2.2. COLLECTION USER SETTINGS/DATA .....	6
2.3 RESTORING USER SETTINGS/DATA.....	6
<b>3. MIGRATION STATUS MONITORING &amp; EDITING</b> .....	<b>8</b>
<b>4. ASSESING WINDOWS 7 READINESS</b> .....	<b>9</b>
<b>5. USER MIGRATION &amp; ACTIVE DIRECTORY</b> .....	<b>10</b>
<b>6. APPENDIX</b> .....	<b>10</b>

# 1. INTRODUCTION

## 1.1 Viewfinity User Migration

In a few simple steps, with the Viewfinity User Migration tool, IT Administrators can capture a user's personal settings, application settings and data files and perform the migration from Windows XP or Vista to Windows 7 – without the need for desk-side visits.

The migration process can be setup for multiple Active Directory user accounts and/or groups and be scheduled to run according to the date/time parameters you set. Typically administrators need to spend a significant amount of time on post-migration tasks in order to reconfigure application settings and the user desktop look and feel, as well as time spent restoring personal files. Some tools are available that automate the migration process but are limited to one-by-one migrations, but this approach still requires a significant time commitment involving both the administrator and end-user.

Using Viewfinity User Migration, administrators can create a Migration Project for multiple AD users and monitor the status of each step of the migration process. End users are provided with the option to perform the personality Collection and Restore process at their convenience without posing any limitations on daily activity.

Viewfinity product is a wizard-based User State Migration tool that works with the Microsoft User State Migration (one-to-one) scripting tool and adds out-of-the-box automation for multiple-user migration, all from a centralized status and monitoring console.

**Note:** For a list of supported user settings which can be migrated using Microsoft's User State Migration tool, please refer to [Microsoft documentation](#):

[http://technet.microsoft.com/en-us/library/dd560792\(W.S.10\).aspx](http://technet.microsoft.com/en-us/library/dd560792(W.S.10).aspx)

# 2. INSTALLATION AND SETUP REQUIRMENTS

## 2.1. Pre-requisites checklist

Before installing Viewfinity User Migration, please review our requirements check list:

- ✓ Viewfinity User Migration requires Microsoft's User State Migration Tool (USMT 4.0). Download User State Migration Tool (USMT) 4.0 with the Windows Automated Installation Kit (Windows AIK) from [Microsoft's Website](#)

<http://www.microsoft.com/downloads/details.aspx?FamilyID=696dd665-9f76-4177-a811-39c26d3b3b34&displaylang=en>

**Note:**

The recommended method is to install AIK on the computer running Viewfinity User Migration Manager. Viewfinity will automatically locate USMT files that are needed for Viewfinity User Migration

Additional option is to install the Windows AIK on another computer and provide path to USMT files during Viewfinity User Migration setup or copy to computer which will be running Viewfinity User migration

Copy all of the contents of C:\Program Files\Windows AIK\Tools\USMT\*<architecture>* to a computer where Viewfinity User Migration will be installed. *<Architecture>* can be either x86 or amd64. For example, at a command prompt, type:

xcopy c:\Program Files\Windows AIK\Tools\USMT\x86 [\\PC1\C\\$\USMT\x86](#)

- ✓ Viewfinity User Migration Manager can be installed on Windows XP, Vista, Windows 7 PC AD domain members computers
- ✓ You must have a user account which is a member of the Domain Admin group
- ✓ Microsoft .Net Framework 3.5 SP1 should be installed on the PC running the Viewfinity User Migration Manager. Refer to [Microsoft's website](#) for a free download.  
<http://www.microsoft.com/downloads/details.aspx?FamilyID=AB99342F-5D1A-413D-8319-81DA479AB0D7&displaylang=en>
- ✓ A dedicated network share for storing the files associated with the collection process for the user personality (Data, OS and Application settings). Ex: [\\server\userstate](#) (Be sure that the Security on the share has Full Control permissions assigned to the AD group: [Authenticated Users](#)).

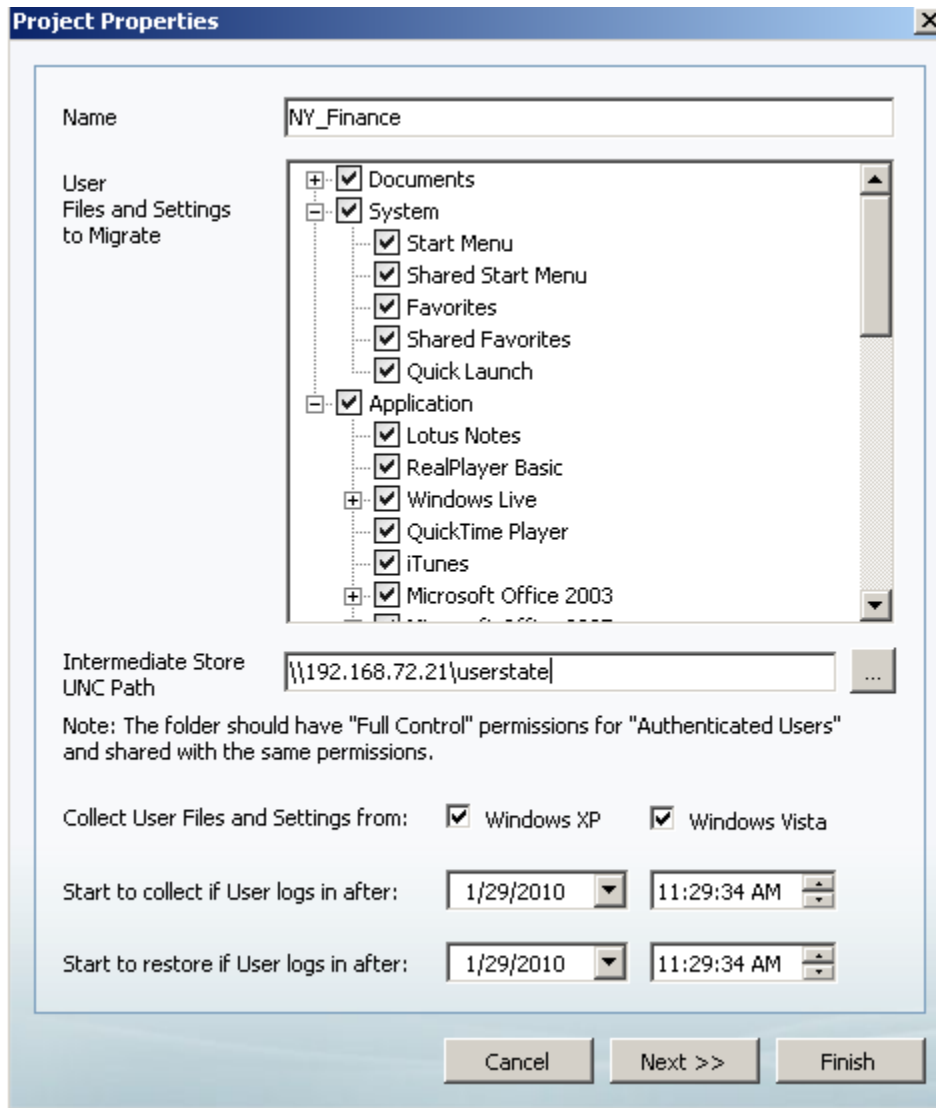
### 3. VIEWFINITY USER MIGRATION USAGE

Migrating user personal settings and data from Windows XP or Vista to Windows 7 consists of 3 steps:

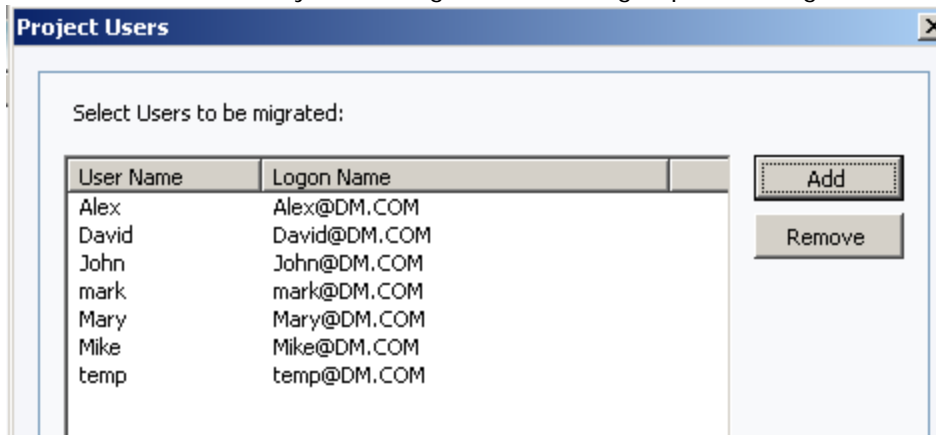
#### 2.1. Create migration Project

The IT Administrator creates a migration project by specifying the settings, applications and data intended to be migrated and associates that project with AD users/groups

1. Select Viewfinity User Migration from the list of installed programs
2. From the Project menu, select New and enter a name for your Project
3. From the list provided, select the user settings and data files to be migrated
4. Select the network UNC path that will temporarily store the user settings/data
5. Specify the date/time for the Collection and Restore process to begin



a) From the Active Directory Tree, assign the users or groups to be migrated



b) Run the Migration Project. The Collection process will not begin until the migration Project is in a Run state.

Project	Status	User Name	Logon Name	Status
NY_Finance	Running (0 of 7)	Alex	Alex@DM.COM	Not started
		David	David@DM.COM	Not started
		John	John@DM.COM	Not started
		mark	mark@DM.COM	Not started
		Mary	Mary@DM.COM	Not started
		Mike	Mike@DM.COM	Not started
		temp	temp@DM.COM	Not started

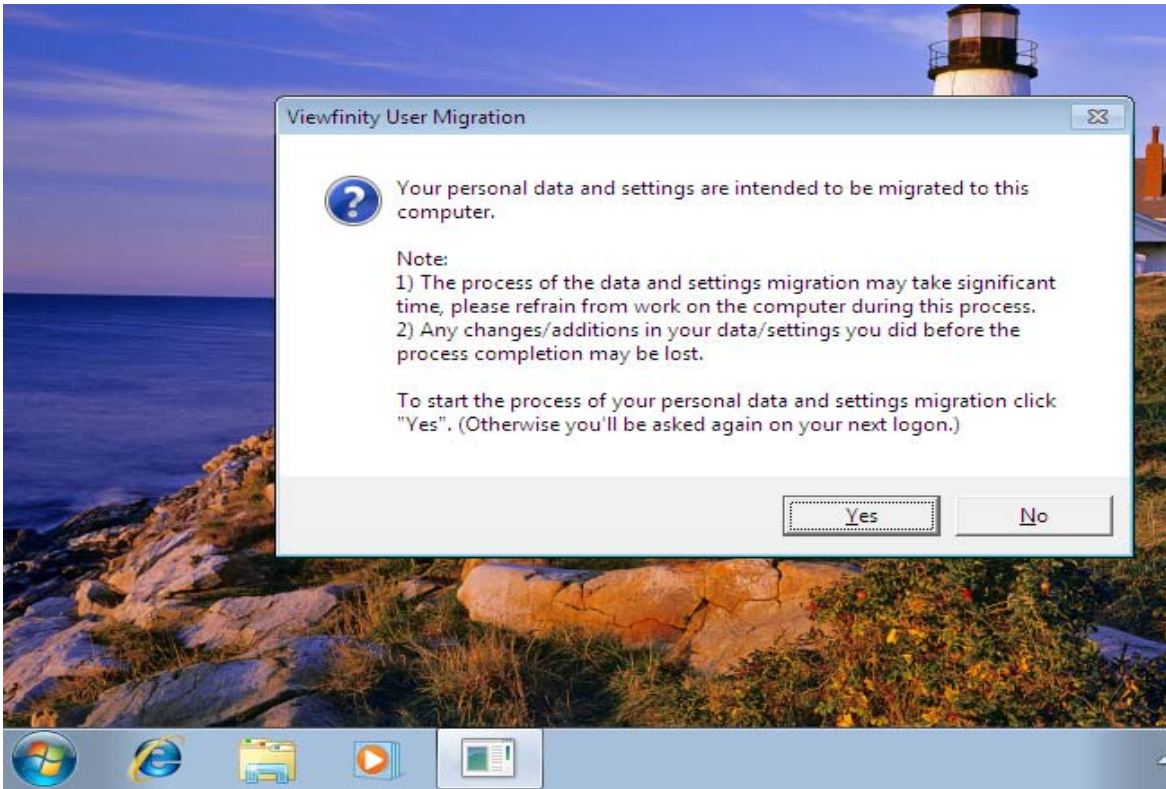
## 2.2. Collection User Settings/data

Once the Migration Project is established and in a running state, the end users who have been scheduled for migration need to log into the PC from which they are migrating, and will be prompted for data/settings for the Collection process. The user has the option to start the Collection process or postpone. If the user postpones the Collection process, the next time they log in, they will be prompt to begin the Collection process. User settings and data will be stored on the network share specified in the Project

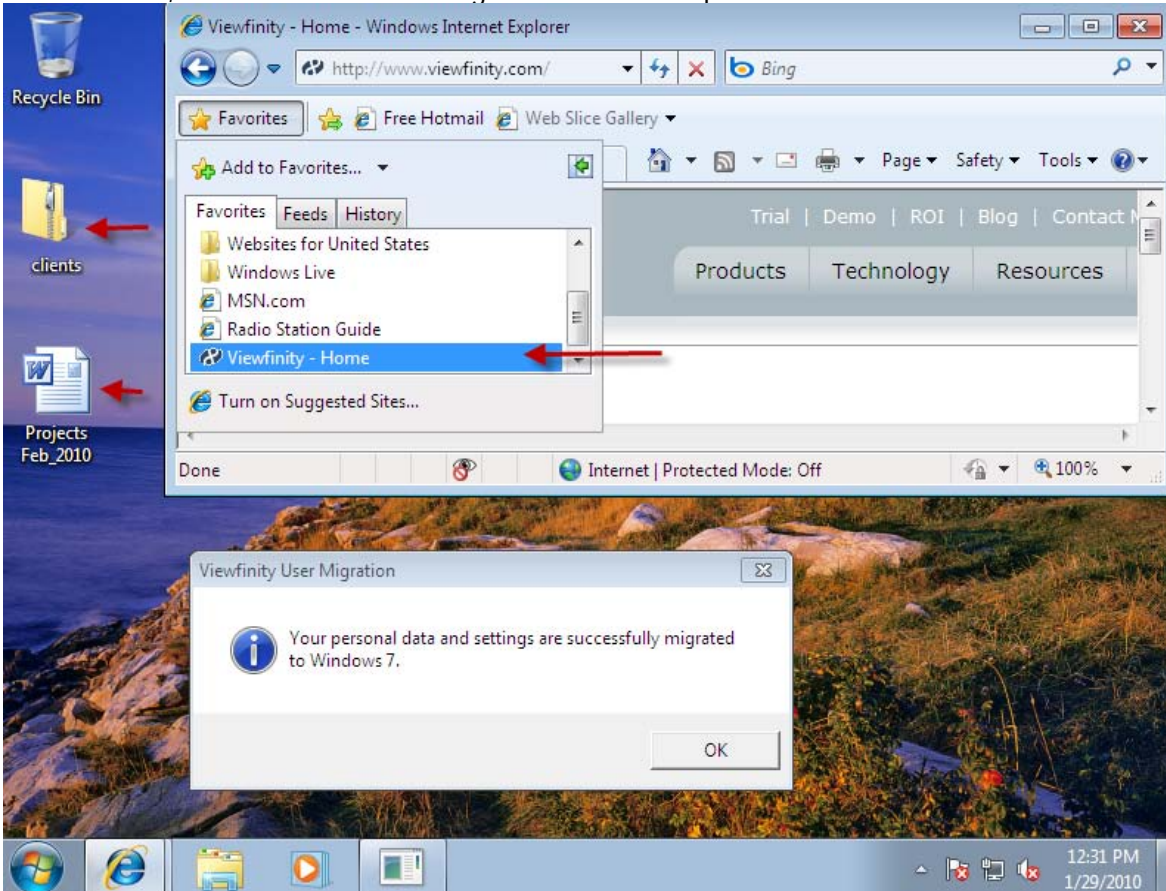
**Note:** in order to present the collection and restore instruction dialogue box to end-users, the User Migration tool automatically creates a Software installation Domain Group Policy. Depending on AD topology, there may be a slight time lag before GPO is replicated. In order for the Software Installation GPO to take effect , logoff/reboot is required from client's desktops before users are prompted for the Collection/Restore processes to start

## 2.3 Restoring user settings/data

Upon the successful Collection of user data/settings, the Restore process will begin the next time the user logs into the Windows 7 PC. The user may elect to start the Restore process or postpone until a later time. The administrator does not need to take any additional steps on the end user PCs, such temporarily assigning local administrator rights to the end user accounts, for the Restore process to be successfully completed. For any applications being migrated that require administrator rights, Viewfinity handles all of this behind the scenes using our Privilege Management features.

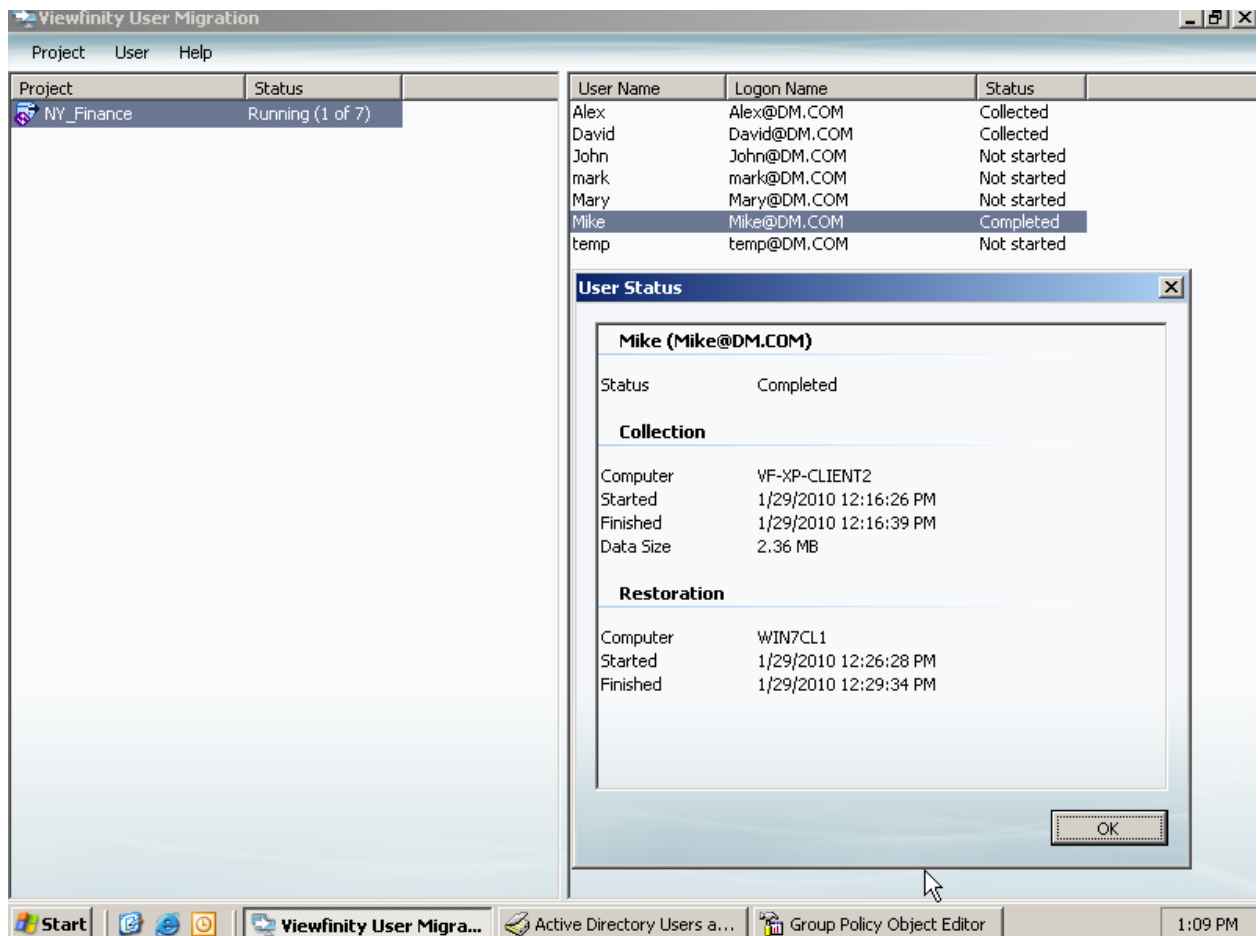


The User Personal Settings specified for migration, including the Application settings, OS settings and user data, were restored on the target Windows 7 computer.



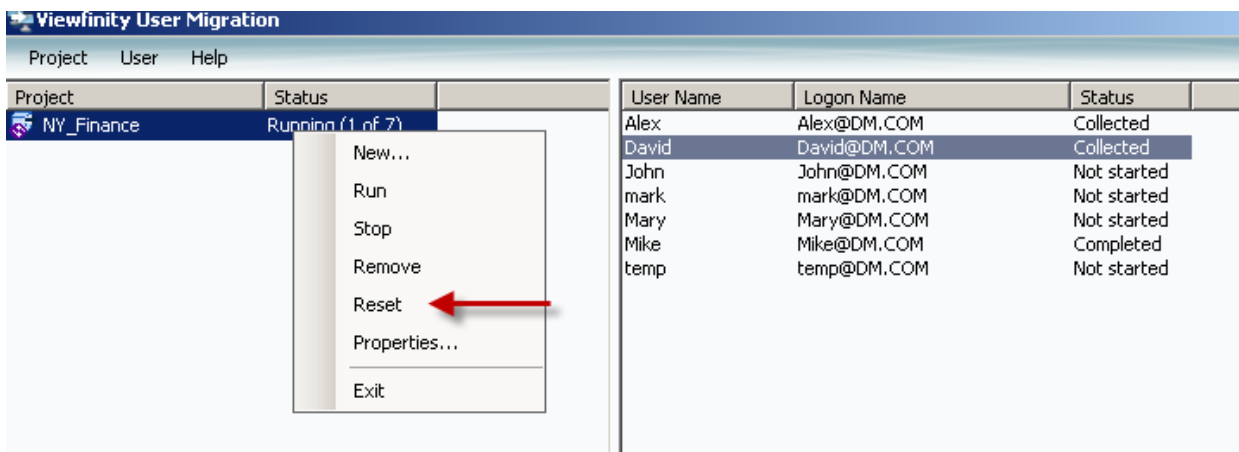
### 3. MIGRATION STATUS MONITORING & EDITING

Administrators may monitor the status of any active migration project for any end users. Reports contain information such as status of user settings/data collection, the size of the collection as well as current status of the migration.



#### Project Menu explanation:

- New. Creates new Project
- Run. Activates the selected Project
- Stop. Stops the Active Project
- Remove the selected Project
- Properties of the selected project
- Reset. If an end user makes additional changes on the source computer after the data has been collected, the administrator can reset the collection for a specific user, which will trigger the Collection process to start again the next time the user logs in.



## 4. ASSESING WINDOWS 7 READINESS

The most important step for a successful migration is to have a very thorough understanding of your current environment. You'll want in-depth, concise knowledge for all computers related to the components of your IT asset portfolio, including hardware, operating systems, applications with associated version information, and patches.

Viewfinity Systems Management provides free asset inventory and assessments reports to help you gauge your Windows 7 readiness. Using Viewfinity's Systems Management product, you can gather asset inventory for every computer within your domain, including PCs in the hands of your mobile workforce.

There is no need to setup an internal server to collect this information because the software is available via Viewfinity's cloud-computing platform. The scan and collection process can be set to automatically begin inventorying the moment a PC connects to the Internet. Simply deploy the Viewfinity agents by performing an automatic discovery of your environment and then from your web browser, you can review the reports related to your environment. The agent can be deployed not only to your internal network or AD, but it can also be pushed to mobile or home users who are not usually connected to corporate LAN.

Viewfinity offers free, unlimited use of its [System Management](#) suite for up to 50 PCs. We encourage you to try it now - in four easy steps and in less than ten minutes, the software can be installed and ready for evaluation.

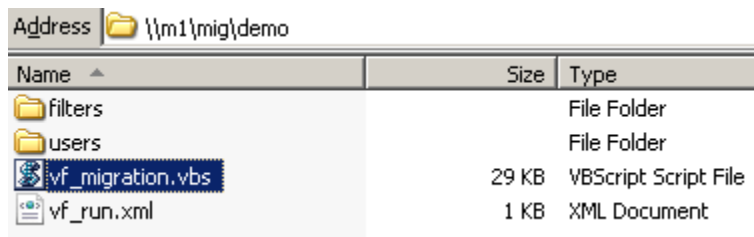
Refreshing your desktops is also a good opportunity to move toward a least privileges environment. Viewfinity [Privilege Management features](#) provide application-level control and policy customization on the desktop. Many policies that formerly required complete lockdown can now be enforced without creating excessive limitations on the end user machine.

## 5. USER MIGRATION & ACTIVE DIRECTORY

Viewfinity User Migration utilizes AD group policy objects for the migration process. The software creates Software Installation GPOs filtered for the users undergoing migration, and deploys a custom MSI files to those users during the logon process. MSI files are placed in the SYSVOL directory to avoid replication and latency issues. Once the migration process is completed, the GPO objects and MSI files are removed from the environment. Depending on AD topology, there may be a slight time lag before GPO is replicated. In order for the Software Installation GPO to take effect , logoff/reboot is required from client's desktops before users are prompted for the Collection/Restore processes to start

## 6. APPENDIX

If you would like to customize end-user message which are presented to users during personal setting collection or restore process you may edit **vf\_migration.vbs** file located on the network share under project folder



Name	Size	Type
filters		File Folder
users		File Folder
vf_migration.vbs	29 KB	VBScript Script File
vf_run.xml	1 KB	XML Document

Below is a print out of vf\_migration.vbs which can be edited according to your requirements.

```
Dim g_strBackupConfirmMsg ' Text to be shown to User before collection
g_strBackupConfirmMsg = "Your personal data and settings are intended to be migrated to Windows 7."&vbCr&vbCr&"Note:"&vbCr&"1) The process of the data and settings collection may take significant time, please refrain from work on the computer during this process."&vbCr&"2) Any changes/additions in your data/settings you will do after the process completion will not be migrated to Windows 7."&vbCr&vbCr&"To start the process of your personal data and settings collection click ""Yes"". (Otherwise you'll be asked again on your next logon.)"

Dim g_strBackupDoneMsg ' Text to be shown to User after collection
```

```
g_strBackupDoneMsg = "Your personal data and settings are  
successfully collected and ready for migration to Windows  
7."&vbCr&vbCr&"On next your login to Windows 7 you will be  
proposed to complete the migration process by restoring your  
data and settings there."
```

```
Dim g_strRestoreConfirmMsg ' Text to be shown to User before  
restore
```

```
g_strRestoreConfirmMsg = "Your personal data and settings  
are intended to be migrated to this  
computer."&vbCr&vbCr&"Note:"&vbCr&"1) The process of the  
data and settings migration may take significant time,  
please refrain from work on the computer during this  
process."&vbCr&"2) Any changes/additions in your  
data/settings you did before the process completion may be  
lost."&vbCr&vbCr&"To start the process of your personal data  
and settings migration click "Yes". (Otherwise you'll be  
asked again on your next logon.)"
```

```
Dim g_strRestoreDoneMsg ' Text to be shown to User after  
restore
```

```
g_strRestoreDoneMsg = "Your personal data and settings are  
successfully migrated"&vbCr&"to Windows 7."
```

```
Dim g_strMsgTitle ' Message box title
```

```
g_strMsgTitle = "Viewfinity User Migration"
```